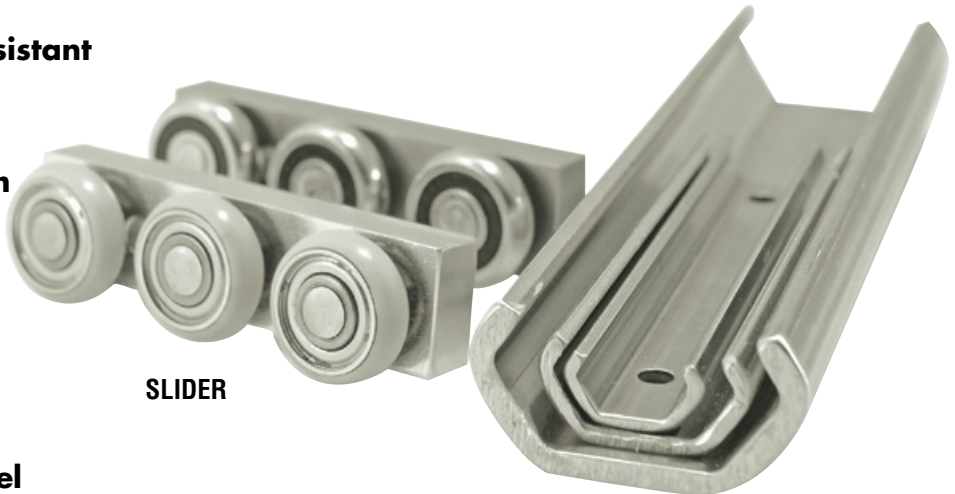


# Commercial Rail

Low cost effective solution for automation, sliding doors, packaging, semi-conductor equipment, and anywhere compact, corrosion-resistant linear motion is required.

- (3) rail sizes 20, 30 and 45 mm
- Speeds up to 1.5 m/s
- Smooth and quiet motion
- Rails available in hardened steel or stainless steel
- Aluminum alloy slider with steel or optional stainless steel rollers
- Rollers lubricated for life and sealed against contamination
- Left or right hand mountable



SLIDER

PRECISION  
STEEL RAIL

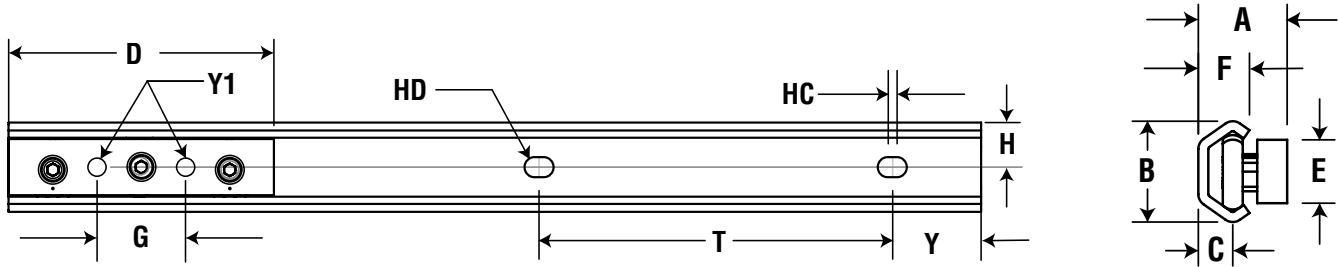
**SAVE**  **TIME**  
& **MONEY**

## MATERIAL & FINISH SPECIFICATIONS

	CR SERIES	SS SERIES
Rail	Carbon steel, Zinc plated	Stainless steel
Slide	Aluminum alloy anodized	Aluminum alloy anodized
Rollers	Chrome steel	Stainless steel
Hardware	Steel zinc plated	Stainless steel 18-8



## DIMENSIONAL DATA



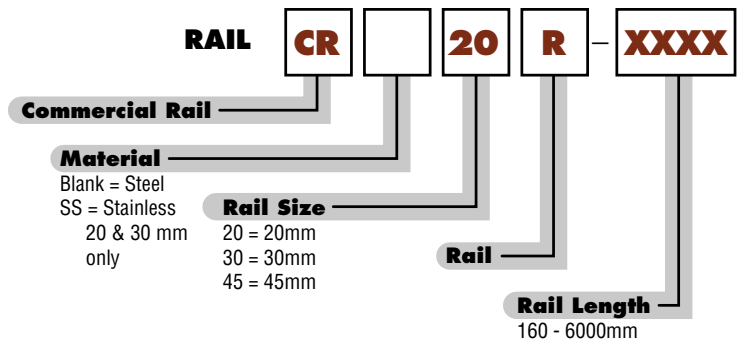
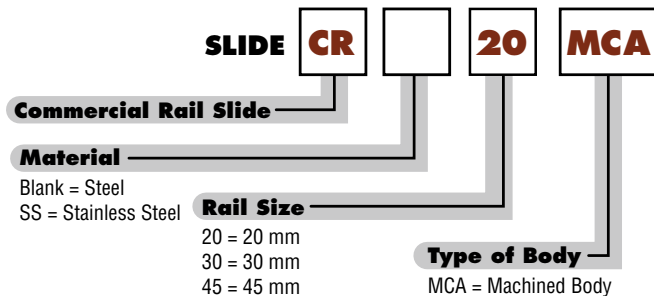
RAIL SIZE	A	B	C	D	E	F	G	H	HC	HD	T	Y	Y1	BHCS	RAIL WT. LBS./FT.	LOAD RATINGS					
																STATIC RADIAL Cor		STATIC AXIAL Coa		DYNAMIC RADIAL Cr	
																N	LBS.	N	LBS.	N	LBS.
CR20	17.8	20	6.9	60	12.7	10.25	20	10.0	2	4.5	80	40	M5	M4	0.31	210	47.2	160	36	280	62.9
CR30	26.5	30	10	80	19.1	15	35	15.0	2	5.5	80	40	M6	M6	0.64	610	137.1	420	94.4	800	179.8
CR45	41.5	45.7	15.5	120	31.8	24	50	22.9	2	9.0	80	40	M8	M8	1.31	1330	299	930	209.1	1740	391.2

SLIDE MATERIAL & SIZE	LOAD RATINGS		
	STATIC RADIAL Cor (N)	STATIC AXIAL Coa (N)	DYNAMIC RADIAL Cr (N)
<b>STEEL</b>			
CR20	210	160	280
CR30	610	420	800
CR45	1330	930	1740
<b>STAINLESS STEEL</b>			
CRSS20	210	160	280
CRSS30	610	420	800
CRSS45	1330	930	1740



THREAD PITCH	
CR20MCA	M5 x 0.8
CR30MCA	M6 x 1.0
CR45MCA	M8 x 1.25

## ORDER INFORMATION



Product information and 2D/3D CAD drawings available for download at [www.pbclinear.com](http://www.pbclinear.com)  
For technical & application information call **1-800-962-8979**.

The data and specifications in this publication have been carefully compiled and are believed to be accurate and correct. However, it is the responsibility of the user to determine and ensure the suitability of PBC Linear® products for a specific application. PBC Linear® only obligation will be to repair or replace without charge, any defective components if returned promptly. No liability is assumed beyond such replacement. Specifications are subject to change without notice.

LITCRT-004 [1.14]

**PBC**  
**LINEAR**  
A PACIFIC BEARING CO.